

# 4 2816 Sandy Ridge Drive | Two Rivers

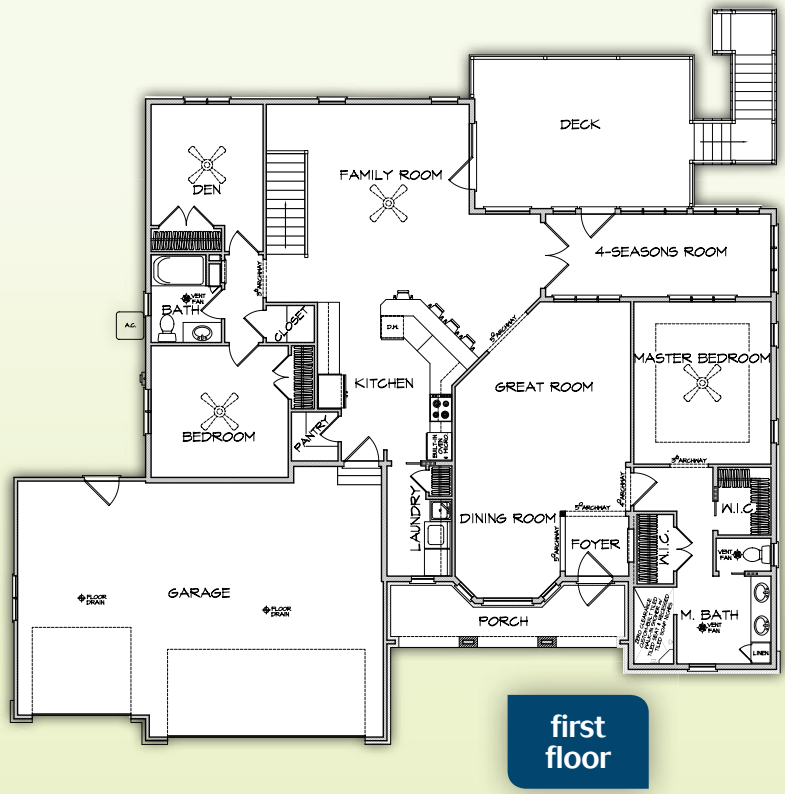
Brian Peterson Builders, Inc. is proud to present this four bedroom southern style ranch home to this year's 2010 Parade of Homes. This home has a roomy walk out finished lower level. We welcome you to tour this custom built home and enjoy archways throughout with bullnose drywalled corners and white painted trim. The master bathroom features a spacious walk in tiled shower. The large appealing sunroom gives you a beautiful view out the back of the home.

Special thanks to the homeowner for the opportunity to build and showcase their beautiful home.



## features

- 2,174 Square Foot – First Floor
- 1,505 Square Foot – Finished Lower Level
- 3,679 Square Foot – TOTAL FINISHED
- Arched Brick Front Porch
- Andersen Casement Windows and Patio Doors
- Beautiful Maple Cabinetry
- Spacious Kitchen with Walk In Pantry and Tiled Backsplash
- Bullnose Drywalled Corners
- White Painted Trim
- Open Staircase to Lower Level with Metal Balusters
- Coffered Tray Ceiling with Crown Moulding in Master Bedroom
- Spacious Walk In Closet
- Walk In Tiled Shower in Master Bathroom
- Finished Lower Level with Guest Bedroom and Bathroom
- Lower Level - Bar Area, Family Room for Entertaining and Gas Fireplace
- Maintenance Free Deck with Stairs to Lower Concrete Patio
- Large 3 Car Insulated and Dry-walled Garage



## subcontractors & suppliers

- American Carpet Center
- B&M Waste Service, Inc.
- Braun Building Center
- City Wide Insulation
- Dan's Plumbing
- Etched In Stone
- Ellerman Glass Inc.
- Green Acres Landscaping, Inc.
- Hockers Brick & Tile
- Lowe's
- Manitowoc Garage Door Service
- McMullen & Pitz Construction Co.
- Pajula Construction
- Roffers Concrete Construction
- Schnell Electric, Inc.
- Schuh's Excavating, Inc.
- Smokey Barbier Heating, Inc.
- The Flower Gallery



*Custom Homes & Remodeling*  
 9809 Fisherville Rd. | Whitelaw, WI 54247  
**bpbuilders@tm.net**  
**920-732-3920**